

BRANDS HATCH CIRCUIT HELICOPTER LANDING INFORMATION

Helicopters are welcome to land at Brands Hatch Circuit subject to the following.

All helicopters must land at the main Helipad Area A, 400m north of the circuit. It is a level grass area upon which helipads may be marked out. An image of the helipad areas can be found on page 2 of this document.

In degrees, minutes and seconds (as Google Earth) the location of Helipad Area A is:

51° 21' 54" N 0° 15' 28" E.

In degrees, minutes and decimals of minutes (as most GPS systems) the location is:

51° 21.90' N 0° 15.47' E

Helipad Area B may be available to helicopters during weekdays but only with express written permission.

Helipad Area B will not be available at weekends.

Helipad C by the MSVC office/hospitality building is strictly reserved for MSV directors' helicopters only.

Helipad Area D is strictly reserved for the air ambulance.

HELIPAD AREA A

Approach and Departure

Approach and depart from the west if wind permits, keeping well clear of any parked cars in the field, otherwise approach and depart to the east though caution the public road adjacent to the east of the helipad. On major events hover taxi north before transitioning west to avoid extensive car parking. **Caution: 150 ft pylons and wires 250m north of Helipad Area A.**

Do not overfly the race circuit and do not overfly the village of West Kingsdown to the south west of the circuit. Make steep approaches and depart at maximum rate of climb. Avoid overflying any residential properties at less than 500ft.

Landing permission

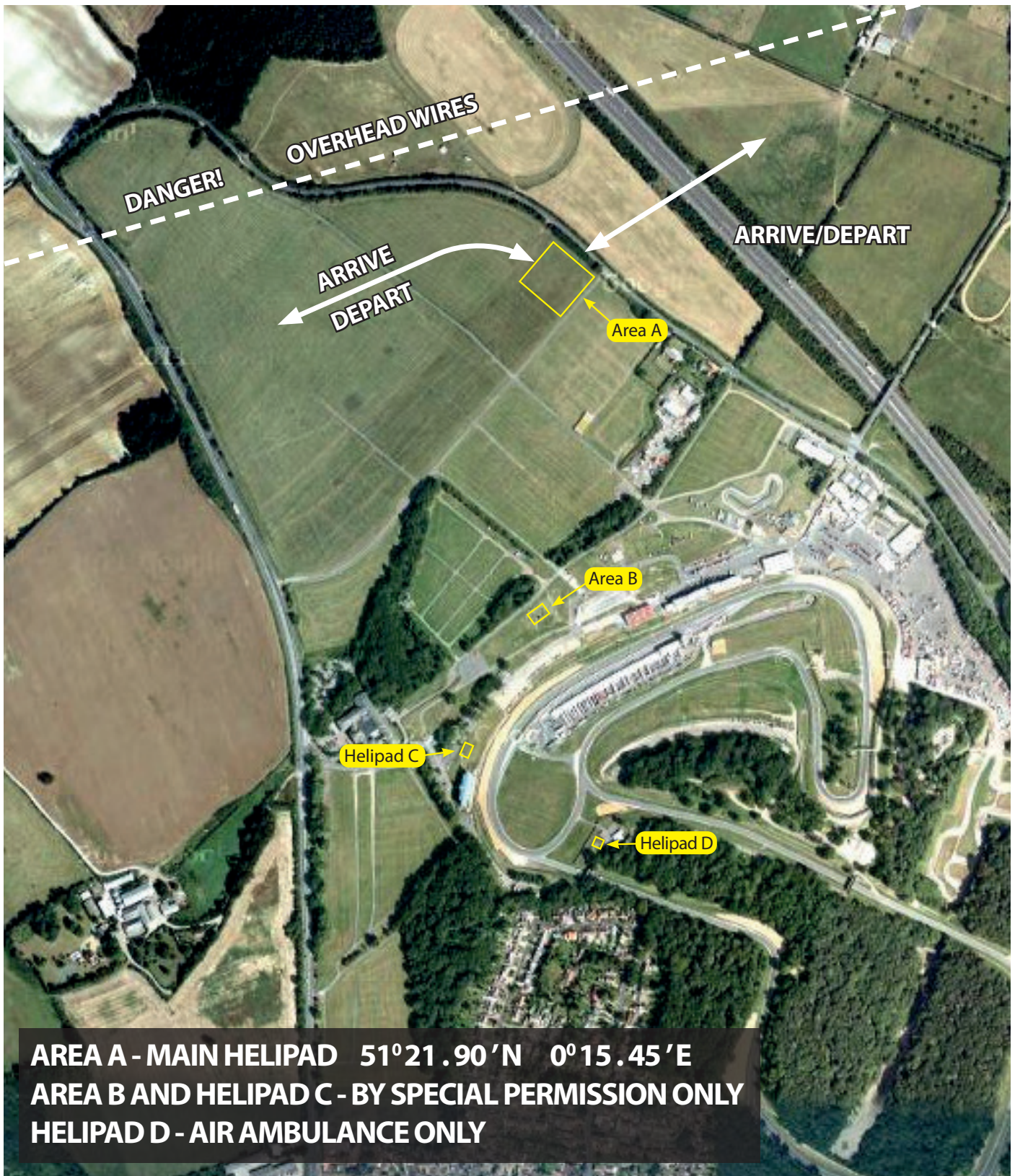
Landing at Brands Hatch is strictly by prior permission. Please complete the form on page 3 of this document and return to Brands Hatch circuit. The landing fee is £50 + VAT.

Ground Transport

Helipad Area A is 10 minutes walk from the paddock areas and restaurants. We recommend you organise your own ground transport if you require it. During weekdays we may be able to provide ground transport if you call the duty manager on 07919 218154 on landing.

Fuel

Jet A1 fuel may be available and if so will be subject to specific arrangements regarding time of availability. Contact the circuit for further information.



BRANDS HATCH HELICOPTER LANDING REQUEST FORM

To request a landing at Brands Hatch circuit please complete the form below, then email or fax it to us with a copy of your aircraft insurance certificate. By requesting a landing at Brands Hatch circuit you confirm the following:

1. You have third party insurance for not less than £5million any one incident and **attach confirmation of cover**. If this is not currently held, extra cover must be provided by your aircraft insurer.
2. You understand that the Brands Hatch Helipads are not licensed and that it is your responsibility to ensure that you are satisfied as to the suitability of the facilities for your purposes and understand that Brands Hatch circuit provides no warranty in this respect.
3. You will follow all requirements set out in the Brands Hatch circuit Landing Information. You will also ensure that you comply with any CAA requirements relating to landing, taking off and flying over open air assemblies.
4. You will indemnify Brands Hatch circuit, MotorSport Vision Limited, and all officers, employees, servants, and agents thereof in respect of any liabilities, direct or indirect and of any kind whatsoever arising out of the use of the facilities by your aircraft.
5. No landings may be before 08.00 or after 20.00 and must be in daylight.

Telephone: 01474 872331
 Email: brandshatch@msv.com
 Fax: 01474 874766

The landing fee is £50 + VAT, paid in advance of landing. Please call the circuit with credit card details. You must receive approval to land by email and this will not be provided until we have received this completed form and payment.

Contact Name		Contact Position	
Mobile No		Email Address	
Aircraft Type		Registration	
Landing Date		Landing Time	
Departing Date		Landing Date	
Arriving From		Departing To	
Pilot Name		Mobile No	
Licence Type		Charter Operator (if applicable)	
Passenger Names			