



## **DONINGTON PARK CIRCUIT HELICOPTER LANDING INFORMATION**

Helicopters are welcome to land at Donington Park Circuit subject to the following.

All helicopters must land at the **Main Helipad** (Area A), 400m south of the circuit and 1nm west of East Midlands Airport. It is a level grass area 60m x 80m. An image of the helipad area is on page 2 of this document. Please park allowing space for other helicopters and with sensible separation.

The Main Helipad co-ordinates are: 52°49.46'N      1°22.93'W

(Please note that these co-ordinates are in degrees, minutes and decimals of minutes, as used by most GPS systems, not degrees, minutes and seconds)

The **Office Helipad** (Area B) adjacent to the new circuit office by the paddock entrance is strictly reserved for MSV directors' helicopters and the air ambulance only.

### **MAIN HELIPAD AREA A**

#### **Approach and Departure**

The Donington Park helipad is situated within the East Midlands Control Zone (CTR). Entry into the CTR and departure from Donington Park is subject to permission from East Midlands Air Traffic Control (ATC).

Inbound:      Contact East Midlands APP 134.180 before reaching the CTR boundary  
Outbound:      Preferably telephone East Midlands ATC on 01332 852993 to book out.  
                         Before starting call TWR on 124.005 for start up and departure clearance.

Important! Approval for SVFR flight within the East Midlands CTR is subject to the cloud base being no less than BKN 006 (600ft) and visibility no less than 1500m. If the weather is worse than this you will not be permitted to enter the CTR to land at Donington Park - or depart from Donington Park. So be aware of the TAF whilst on the ground at Donington Park!

Make your final approach and departure to the helipad from/to the east, keeping clear of any parked cars in the field.

#### **Caution: Fence 0.5m high surrounding alighting area.**

Do not overfly the race circuit and do not overfly the no fly zones clearly marked on the image on page 2 of this document. Make steep approaches and depart at maximum rate of climb. Avoid overflying any residential properties less than 500ft.

#### **Landing permission**

Landing at Donington Park is strictly by prior permission. Please complete the form on page 3 of this document and return to Donington Park Circuit. The landing fee is £50 +VAT.

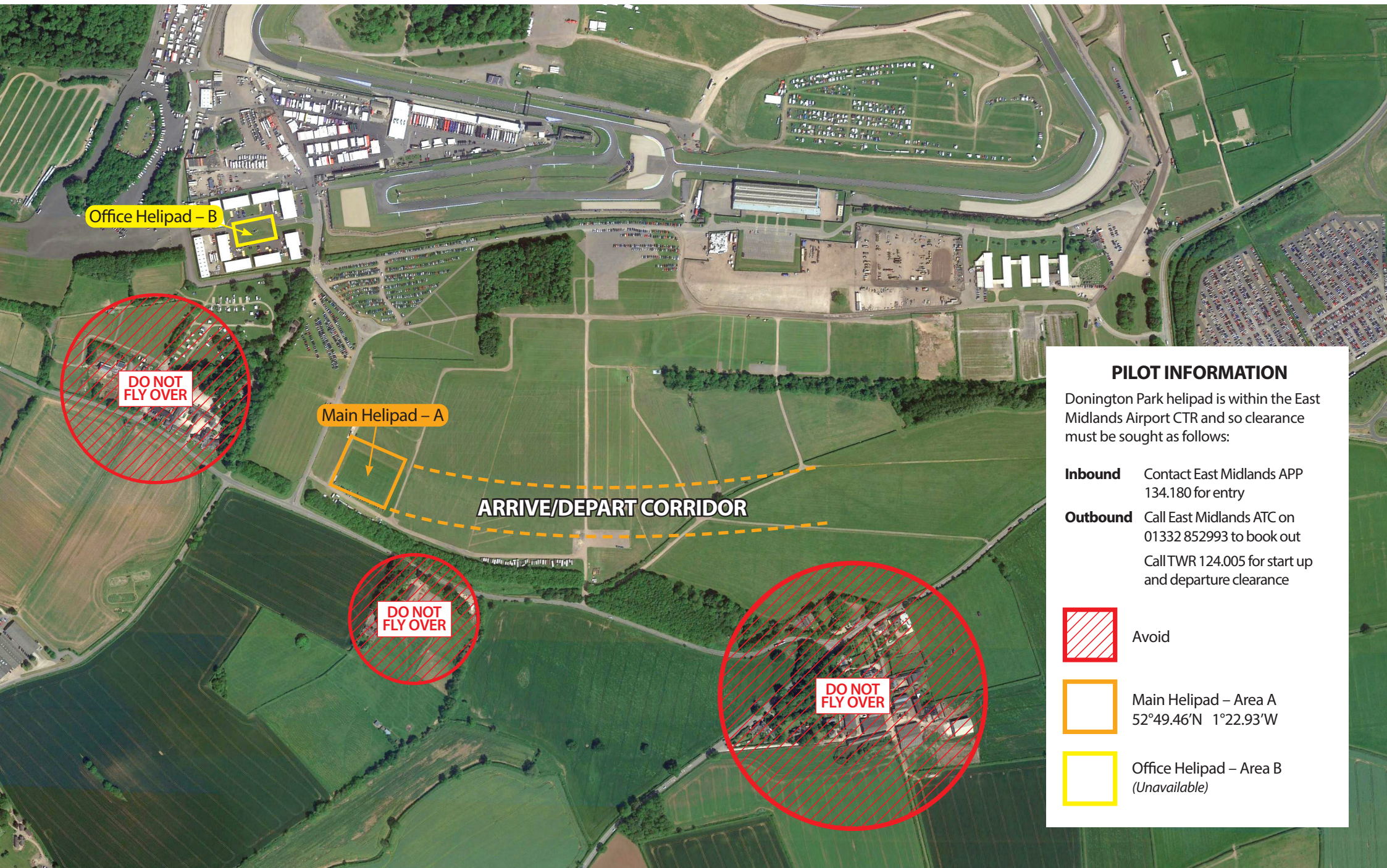
#### **Ground Transport**

Helipad Area A is 10 minutes walk from the paddock areas and restaurant. We recommend you organise your own ground transport if you require it. During weekdays we may be able to provide ground transport if you call the duty manager on 01332 810 048 or 07881 372 363 on landing.

#### **Fuel**

Jet A1 and Avgas fuel is not available.

# HELICOPTER LANDING



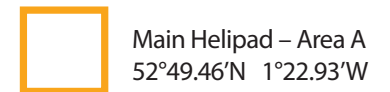
## PILOT INFORMATION

Donington Park helipad is within the East Midlands Airport CTR and so clearance must be sought as follows:

- Inbound** Contact East Midlands APP 134.180 for entry
- Outbound** Call East Midlands ATC on 01332 852993 to book out  
Call TWR 124.005 for start up and departure clearance



Avoid



Main Helipad - Area A  
52°49.46'N 1°22.93'W



Office Helipad - Area B  
(Unavailable)



**DONINGTON PARK HELICOPTER LANDING REQUEST FORM**

To request a landing at Donington Park circuit please complete the form below, then email or fax it to us with a copy of your aircraft insurance certificate. By requesting a landing at Donington Park circuit you confirm the following:

1. You have third party insurance for not less than £5million any one incident **and attach confirmation of cover**. If this is not currently held, extra cover must be provided by your aircraft insurer.
2. You understand that the Donington Park Helipads are not licensed and that it is your responsibility to ensure that you are satisfied as to the suitability of the facilities for your purposes and understand that Donington Park circuit provides no warranty in this respect.
3. You will follow all requirements set out in the Donington Park circuit Landing Information. You will also ensure that you comply with any CAA requirements relating to landing, taking off and flying over open air assemblies.
4. You will indemnify Donington Park circuit, MotorSport Vision Limited, and all officers, employees, servants, and agents thereof in respect of any liabilities, direct or indirect and of any kind whatsoever arising out of the use of the facilities by your aircraft.
5. No landings may be before 08.00 or after 20.00 and must be in daylight.

Telephone: 01332 810048  
 Email: info@donington-park.co.uk

The landing fee is £50 + VAT, paid in advance of landing. Please call the circuit with credit card details once this form has been submitted. You must receive approval to land by email and this will not be provided until we have received this completed form and payment.

Contact name		Contact position	
Mobile no		Email address	
Aircraft type		Registration	
Landing date		Time	
Departing date		Time	
Arriving from		Departing to	
Pilot name		Mobile no	
Licence type		Charter operator (if applicable)	
Passenger names			