

EMERGENCIES

Fire, medical and security teams are on site for the duration of the campsite opening hours, and are present for the safety and well-being of all campers. Please respect any instructions given by them. Any campers found to be acting irresponsibly may be evicted from the campsite without refund of tickets.

**IN THE EVENT OF AN EMERGENCY, FOR 24HR ASSISTANCE
CALL 07557 396208**

Valuables and Security

Please be vigilant against theft. Personal items and valuables are left at your own risk. MSV accept no responsibility for loss or damage sustained to these items.

Food and Drink

Garage 39 bar and restaurant, located in the paddock will be open throughout the weekend. Open from 07:30, serving food until 20:00 and drinks until 23:00.

Waste & litter

Please make use of the rubbish bags provided and, when full, dispose in the waste bins located around the campsite. More bags are available from the campsite entrance booth.

Noise

Noise curfews are 22:00 in the Outfield Campsite and 23:00 in the Infield Campsite. Any campers that persist in making excessive noise after this time may be evicted from the campsite without refund of ticket fees.

Age restrictions

Campers under the age of 16 years must be accompanied by an appropriate adult.

Animals

Strictly no animals are allowed on site at any time. Assistance dogs are permitted when pre-arranged with the venue.



Prohibited Items

For everyone's safety and enjoyment, the following are prohibited:

- Fireworks
- Fires/Firewood/Chimineas
- Chinese lanterns
- Scooters/mini-motos/any vehicle not registered for the road
- Drones
- Laser pens

Any such items will be confiscated by the campsite security team and any campers in possession of these items may be evicted from the campsite without refund of ticket fees.



Safety

- Fires are not permitted in the campsite (no wood burning)
- Barbecues are permitted to cook food, but must be raised off the ground. Please dispose of coals and single-use barbecues (once cool) in the metal bins provided
- Never leave a hot stove or barbecue unattended
- Keep roadways and fire lanes clear at all times
- Store fuel and generators away from ignition sources
- Fire extinguishers are located at various fire points around the campsite. Use only in an emergency and raise the alarm immediately
- Campsite speed limit is 10mph. Only drive if strictly necessary and watch for children
- Secure tents and gazebos carefully – expect high winds!
- No laser pens

Carbon Monoxide (CO) Gas Can Kill!

- It's an odourless gas and does not smell
- Never use a portable barbecue or gas burner inside a tent, awning or enclosed space (for cooking, or heating when cold)
- A cooling barbecue can also give off poisonous gas!
- Never run a generator inside a tent, awning or confined space
- Consider purchasing a Carbon Monoxide alarm and use it inside your caravan or motorhome if running an installed gas appliance – but don't rely on it!

Safe Gas Cylinder Storage and Use

- Always check your cylinder for damage before using
- Maintain good ventilation when using portable gas (remember to use it outside only)
- Always store in an upright position
- If a cylinder falls over, check it, stand it up and leave it to settle before connecting it
- Never smoke near any gas cylinders and keep all ignition sources away
- Always use manufacturer hoses, connectors and follow their guidance
- If you use a gas appliance, service it regularly by an authorised technician from the Gas Safe Register (minimum annually)



CAMPING INFORMATION

MOTUL FIM SUPERBIKE WORLD CHAMPIONSHIP

FRIDAY 15 - SUNDAY 17 JULY 2022

Welcome to Donington Park. We hope you have a very enjoyable time this weekend. Please take a moment to read the following rules for our campsite.

Opening and departure times

The campsite opens at 12:00 on Thursday 14 July 2022.

The campsite will close at 12:00 on Monday 18 July 2022.

Directions

Please follow the camping symbol on the highway signage for the campsite. The campsite is accessed via the Donington Park West Entrance, DE74 2BN, which is the entrance closest to the market town of Melbourne. On arrival to the venue, please follow the signs to the campsite.

Private vehicles on campsite

Road-registered vehicles are permitted within the campsites, but scooters and mini-motos are not permitted. Please be considerate of others and keep vehicle movement to a minimum. No drinking and driving. Sleeping in vans is not advised, but not prohibited. Campsite speed limit is 10mph.



Fire Safety

- No open fires
 - All barbecues to be raised off the ground
 - Familiarise yourself with the fire point locations
 - Raise the alarm: immediately report all fires to the campsite security team
 - Keep gas canisters in the shade at all times
- Dispose of all sources of ignition responsibly

**Please report any problems or emergencies
to a member of staff**

**IN THE EVENT OF AN EMERGENCY,
FOR 24HR ASSISTANCE CALL 07557 396208**

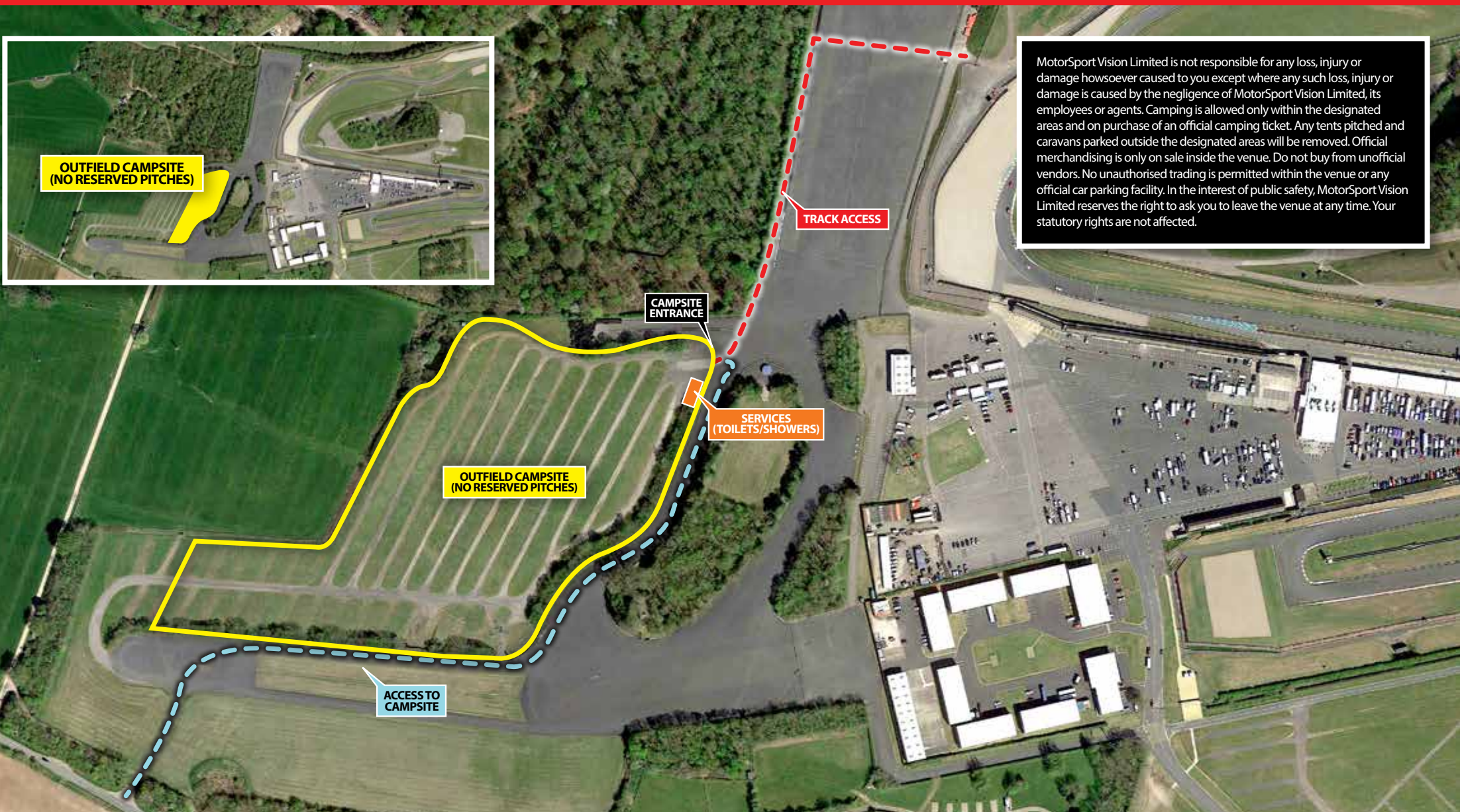
0344 225 4422
www.donington-park.co.uk

DoningtonPark

CAMPSITE MAP



**IN THE EVENT OF AN
EMERGENCY, FOR
24HR ASSISTANCE
CALL 07557 396208**



MotorSport Vision Limited is not responsible for any loss, injury or damage howsoever caused to you except where any such loss, injury or damage is caused by the negligence of MotorSport Vision Limited, its employees or agents. Camping is allowed only within the designated areas and on purchase of an official camping ticket. Any tents pitched and caravans parked outside the designated areas will be removed. Official merchandising is only on sale inside the venue. Do not buy from unofficial vendors. No unauthorised trading is permitted within the venue or any official car parking facility. In the interest of public safety, MotorSport Vision Limited reserves the right to ask you to leave the venue at any time. Your statutory rights are not affected.

**Please report any problems or emergencies
to a member of staff**

**IN THE EVENT OF AN EMERGENCY,
FOR 24HR ASSISTANCE CALL 07557 396208**

0344 225 4422
www.donington-park.co.uk

DoningtonPark